



# MONTHLY MEMBERSHIP PROGRESS REPORT

District 325A1

Results as of: 06/30/2018

GMT: KHAGENDRA SITLAULA

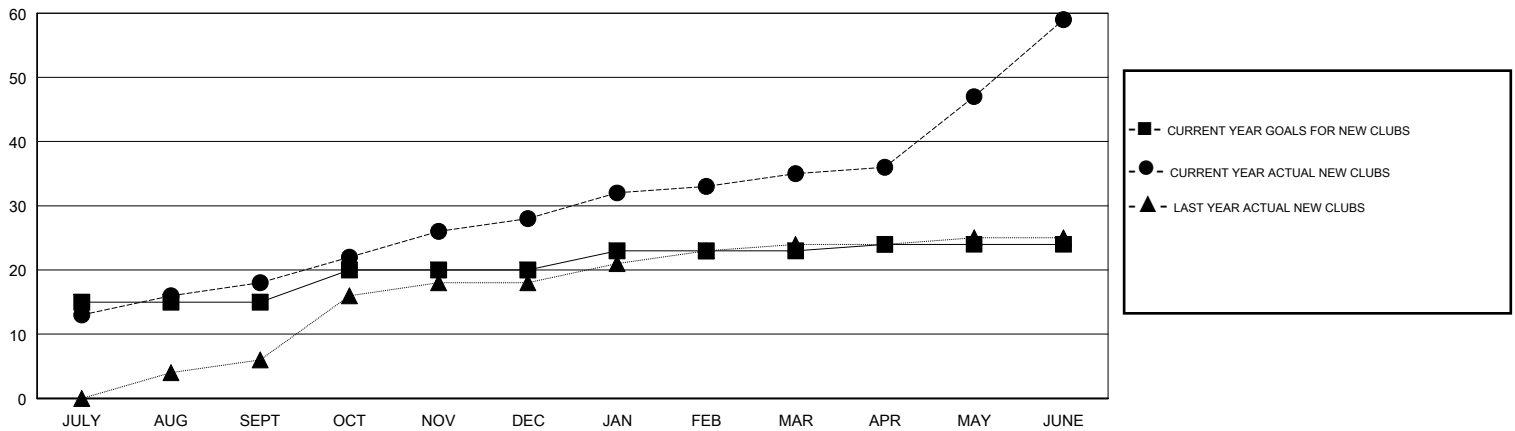
LOCATION NEPAL

GMT CA

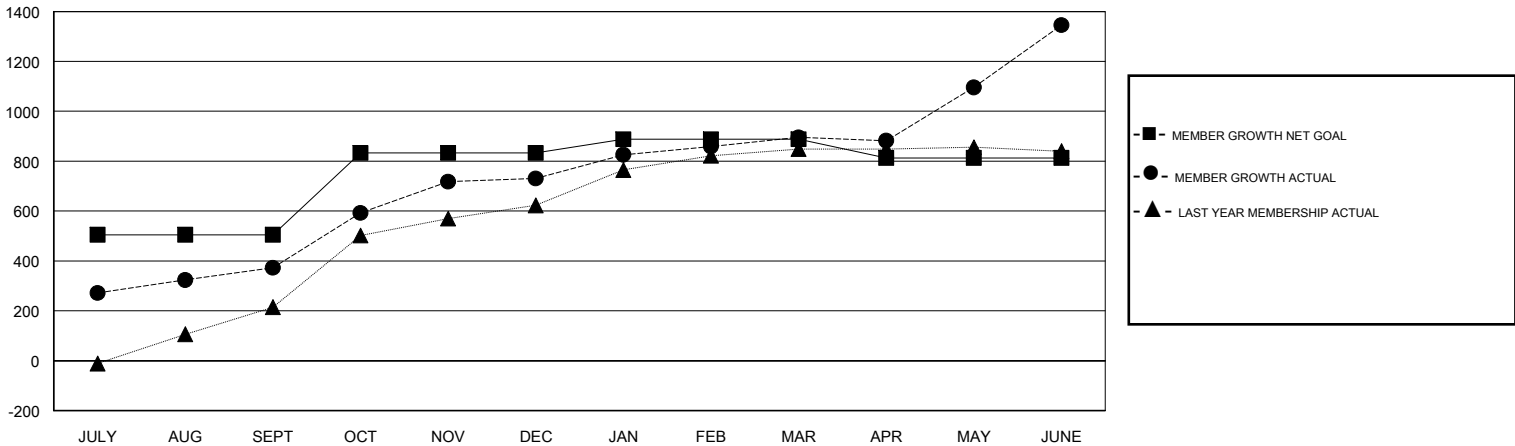
Clubs			
RESULTS FOR 2017-2018			
QUARTER	NEW CLUB GOAL	NEW CLUBS	DROPPED CLUBS
JULY/AUG/SEPT	15	18	0
OCT/NOV/DEC	5	10	1
JAN/FEB/MAR	3	7	0
APR/MAY/JUNE	1	24	1

Members			
RESULTS FOR 2017-2018			
QUARTER	MEMBER GROWTH NET GOAL	MEMBER GROWTH ACTUAL	DROPPED MEMBERS ACTUAL (including transfers)
JULY/AUG/SEPT	505	543	168
OCT/NOV/DEC	328	424	66
JAN/FEB/MAR	55	236	70
APR/MAY/JUNE	-75	810	332

GOALS AND ACTUAL NEW CLUBS CUMULATIVE



GOALS AND ACTUAL MEMBERS CUMULATIVE



DROPPED CLUBS: 2	150 CLUBS OF 188 ADDED 1 OR MORE NEW MEMBERS	<u>GENDER DISTRIBUTION</u>	
DROPPED MEMBERS		MALE	3,874 (72.15%)
DECEASED	5	FEMALE	1,495 (27.85%)
CLUB CANCELLED	30	Women Percentage Fiscal Year Goal: 28%	
OTHER	601	TOTAL FAMILY UNIT MEMBERS	0
TOTAL	636	FAMILY MEMBERS PAYING HALF DUES	0

[CLICK HERE FOR CUMULATIVE MEMBERSHIP DATA](#)